

GATEMASTER

Bolt on Latch Deadlock

Specification Sheet
No.150

- Stainless steel latchbolt which springs 13mm into the gate post and then moves 30mm when the key is turned to deadlock the lock
- Latchbolt is adjustable in length for precise fitting on site
- Easy to rotate latchbolt for LH/RH gates
- Supplied with handles – three styles available
- Supplied with bolt guide plate and gate post strike plate

Product Options

Two locks available,

- SBLD1601** to fit flat bar and up to 30mm box section
SBLD1602 to fit 40mm to 60mm box section

Three styles of handle available

- TDH** Traditional handle set
AH Black lever handle set
OK Octagon knob set

Installation

1. Drill 2 x 9mm dia. holes at 92mm centres for M8 fixing bolts
2. Drill 18mm clearance hole for latchbolt at 22mm centres down from the top 9mm hole
3. Fix lock in place using stainless steel clamp plate, bolt support plate and 2 stainless steel countersunk fixing bolts supplied
4. Drill clearance hole in gate post to receive the latchbolt. Slot this hole vertically to allow for gate sag
5. Ensure latchbolt moves freely without binding on gate or frame

Maintenance

Every 2 months - Lubricate latchbolt with light oil.
 Annually – Dismantle lock and spray mechanism inside with light oil

Related Products



Deadlock



Latch



Keylatch



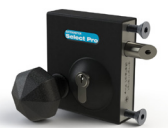
SBLD1601



With Traditional Handles



With Black Lever Handles



With Octagon Knobs

